

BERTRAMKA RESIDENCE

Apartment B1



Ash Wood Residential Floor

Ground floor 3+kitchenette

Room	Area in m ²
Hall	12,0
WC	2,2
Living room with kitchen	47,4
Room 1	28,0
Room 2	14,0
Bathroom, WC	5,6
Terrace	175,4

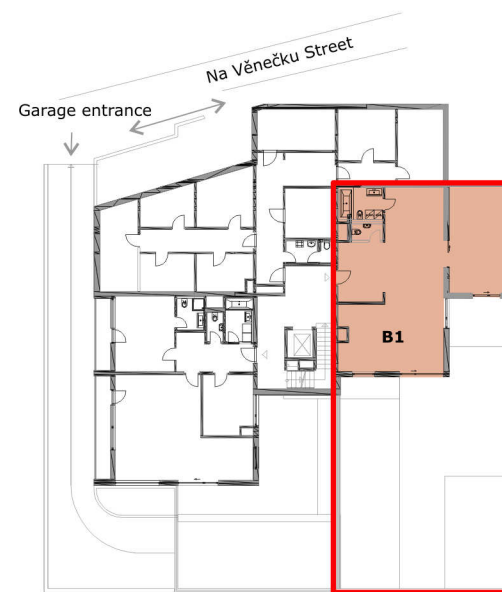
Area of apartment

109,2

Terrace

175,4

The price includes one cellar and two garage parking.



0 | 1 | 2 | 3 | 4 | 5 | 6 | 7 | 8 | 9 | 10 | 11 | 12 | 13 | 14 | 15